

MONTGOMERY COUNTY BOARD OF EDUCATION MINUTES

November 15, 2021

The Montgomery County Board of Education convened in a special called meeting on Monday, November 15, 2021 at 5:30 pm in the Montgomery County Central Office Boardroom. Board members present were Steven W. DeBerry – Chair, Tommy Blake – Vice Chair, Bryan Dozier, Lynn Epps, Jesse Hill, Anne Evans and Cindy Taylor.

Chairman Steve DeBerry called the meeting to order and moved to adopt the agenda as shown. Bryan Dozier made the motion with Jesse Hill seconding. The agenda was accepted with unanimous approval from the board.

Chairman DeBerry explained the purpose of this special called public hearing was to gather feedback regarding alternative maps for the newly proposed school board districts. Chairman DeBerry called upon Dr. Dale Ellis. Dr. Ellis stated we received a presentation at the last board meeting that showed three different alternatives developed by Redistricting Services. We are at the point we do need to make a decision amongst those alternatives. This information must be sent to the board of elections by November 17. The board of elections needs to have this uploaded in their website. Dr. Ellis turned the hearing over to Marshall Hurley and Bill Gilkeson. Marshall Hurley started by reviewing the summary and the process. He explained the legal formality needed when the public hearing concludes and you are ready to make a decision. There will be two motions appropriate at that time. First motion will determine the finding of fact as a board that the districts are no longer proportioned properly. The second motion will be for actual adoption and authorizing them to draft the papers. The two motions were printed and provided to the board.

Chairman DeBerry stated that no one signed up to speak and asked if anyone in the audience wished to address the Board. Hearing none they moved forward from there. Bryan Dozier made the motion to close the public hearing with Tommy Blake seconding. The motion carried unanimously with the Board.

Anne Evans read suggested motion #1 aloud to the board. “I move that the Board find as a fact that its current electoral districts are out of compliance with the one-person/one-vote principle and that redistricting is required by law.” Lynn Epps seconded the motion. The motion carried unanimously with the board.

Chairman DeBerry opened for discussion of the three map alternatives. Tommy Blake stated that alternative A is similar to what we have and that is what voters would like to have. Bryan Dozier agreed that it would be the least change. Max Garner consulted with members for a motion. Tommy Blake made the motion to accept alternative A. Bryan Dozier seconded. Chairman DeBerry opened for discussion. After discussion among board members regarding the three alternatives. Bryan Dozier read suggested motion #2 aloud to the board. “I move that the Board adopt Alternative A as the Board’s redistricting plan following the 2020 census. I further move that the Board’s redistricting consultants are authorized to prepare the appropriate resolutions and documents, and that the Chairman is authorized to execute those documents as appropriate upon their completion.” Tommy Blake seconded. The motion carried unanimously with the board. The following alternative A was approved.

MONTGOMERY COUNTY BOARD OF EDUCATION

November 15, 2021

**RESOLUTION ADOPTING NEW ELECTION
DISTRICT BOUNDARIES**

WHEREAS, the Montgomery County Board of Education includes seven members elected from districts; and

WHEREAS, the election districts are subject to the constitutional and statutory requirement of one-person/one-vote; and

WHEREAS, the Board of Education has recently received and reviewed the population of the districts as determined by the 2020 federal census; and

WHEREAS, the Board of Education has determined that the population of the districts is out of balance and that the boundaries of the districts need to be altered to provide equal representation; and

WHEREAS, the Board of Education is authorized and required by North Carolina General Statutes § 160A-23.1 to revise its district boundaries to correct population imbalances shown by a federal census; and

WHEREAS, on November 1, 2021, the Board of Education, meeting in public session, reviewed and considered alternative plans for redistricting; and

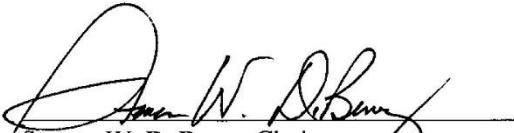
WHEREAS, on November 15, 2021, the Board of Education held a public hearing to receive comments on alternative plans, labeled as Option A, Option B, and Option C; and

WHEREAS, Option A considered by the Board of Education and presented to the public would satisfy the requirements of one-person/one-vote; and

NOW, THEREFORE, BE IT RESOLVED by the Board of Education as follows:

1. The boundaries of the seven districts for election of the Board of Education are altered to follow the lines depicted on the attached map (Attachment 1) entitled Option A.
2. The attached map has been prepared from United States Census Bureau maps and the district boundaries have been drawn to follow census block lines. A list of the voting precincts and census blocks in each district is attached for reference (Attachment 2) and to resolve any issue that might arise concerning the boundaries of the districts.
3. The new district boundaries shall be used for the next election of Board of Education members and for each subsequent election until the boundaries are altered according to law.
4. Maps and information about the new district boundaries attached to this Resolution shall be provided to the Montgomery County Board of Elections with the request that the Board notify residents of Montgomery County of changes in the districts in which they vote.
5. A copy of this Resolution and the map showing the district boundaries shall be retained in the office of the Superintendent and shall be submitted to any other official or agency as necessary or as required by law.

ADOPTED this the 15th day of November 2021.


Steven W. DeBerry, Chairman
Montgomery County Board of Education

ATTEST: 
Clerk

ATTACHMENT 2

Description using 2020 Census geography of districts for Montgomery County Board of Education, Alternative A Adopted, approved by the Board on November 15, 2021.

(This text reflects the plan approved by the Board with minor technical changes involving no population.)

District 1

District 1: Montgomery County: Vtd MT GILEAD: Block 9604011006, Block 9604011014, Block 9604011015, Block 9604011016, Block 9604011017, Block 9604011019, Block 9604011022, Block 9604011023, Block 9604011024, Block 9604011025, Block 9604011027, Block 9604011028, Block 9604011029, Block 9604011030, Block 9604011031, Block 9604011033, Block 9604011034, Block 9604011035, Block 9604011036, Block 9604011037, Block 9604011047, Block 9604011056, Block 9604012006, Block 9604012007, Block 9604012008, Block 9604012012, Block 9604012013, Block 9604012014, Block 9604012023, Block 9604012024, Block 9604012025, Block 9604012026, Block 9604012027, Block 9604012028, Block 9604022032, Block 9604023062, Block 9604023063, Block 9604023064; Vtd PEE DEE: Block 9604011020, Block 9604011021, Block 9604011026, Block 9604011051, Block 9604011052, Block 9604022001, Block 9604022002, Block 9604022003, Block 9604022004, Block 9604022005, Block 9604022006, Block 9604022007, Block 9604022008, Block 9604022009, Block 9604022010, Block 9604022011, Block 9604022012, Block 9604022013, Block 9604022014, Block 9604022015, Block 9604022016, Block 9604022017, Block 9604022018, Block 9604022019, Block 9604022020, Block 9604022021, Block 9604022022, Block 9604022023, Block 9604022027, Block 9604022028, Block 9604022029, Block 9604022030, Block 9604022033, Block 9604023000, Block 9604023001, Block 9604023002, Block 9604023003, Block 9604023004, Block 9604023005, Block 9604023006, Block 9604023007, Block 9604023008, Block 9604023009, Block 9604023010, Block 9604023011, Block 9604023012, Block 9604023013, Block 9604023014, Block 9604023015, Block 9604023016, Block 9604023017, Block 9604023018, Block 9604023019, Block 9604023020, Block 9604023021, Block 9604023022, Block 9604023023, Block 9604023024, Block 9604023025, Block 9604023026, Block 9604023027, Block 9604023028, Block 9604023029, Block 9604023030, Block 9604023031, Block 9604023032, Block 9604023033, Block 9604023034, Block 9604023035, Block 9604023036, Block 9604023037, Block 9604023038, Block 9604023039, Block 9604023040, Block 9604023041, Block 9604023042, Block 9604023043, Block 9604023044, Block

9604023045, Block 9604023046, Block 9604023047, Block 9604023048, Block 9604023049, Block 9604023050, Block 9604023051, Block 9604023052, Block 9604023053, Block 9604023054, Block 9604023055, Block 9604023056, Block 9604023057, Block 9604023058, Block 9604023059, Block 9604023060, Block 9604023061, Block 9604023065, Block 9604023066, Block 9604023067, Block 9604023068, Block 9604023069, Block 9604023070, Block 9604023071, Block 9604023072, Block 9604023073, Block 9604023074, Block 9604023075, Block 9604023076, Block 9604023077, Block 9604023078, Block 9604023079, Block 9604023080, Block 9604023081; Vtd UWHARRIE: Block 9603011002, Block 9603011003, Block 9603011004, Block 9603011005, Block 9603011006, Block 9603011007, Block 9603011008, Block 9603011009, Block 9603011010, Block 9603011012, Block 9603011013, Block 9603011014, Block 9603011015, Block 9603011016, Block 9603011017, Block 9603011018, Block 9603011021, Block 9603011026, Block 9603011027, Block 9603011028, Block 9603011029, Block 9603011030, Block 9603011031, Block 9603011032, Block 9603011033, Block 9603011034, Block 9603011035, Block 9603011036, Block 9603011037, Block 9603011038, Block 9603011039, Block 9603011040, Block 9603011041, Block 9603011042, Block 9603011043, Block 9603011044, Block 9603011045, Block 9603011046, Block 9603011047, Block 9603011048, Block 9603011049, Block 9603011050, Block 9603011051, Block 9603011052, Block 9603011053, Block 9603011054, Block 9603011055, Block 9603011056, Block 9603011057, Block 9603011058, Block 9603011059, Block 9603011060, Block 9603011061, Block 9603011062, Block 9603011063, Block 9603011064, Block 9603011065, Block 9603011066, Block 9603011067, Block 9603011068, Block 9603011069, Block 9603011070, Block 9603011071, Block 9603011072, Block 9603011073, Block 9603011074, Block 9603011075, Block 9603011076, Block 9603011077, Block 9603011078, Block 9603011082, Block 9603011083, Block 9603011084, Block 9603011085, Block 9603011086, Block 9603011087, Block 9603011088, Block 9603011089, Block 9603011090, Block 9603011091, Block 9603011092, Block 9603011093, Block 9603011094.

District 2

District 2: Montgomery County: Vtd ELDORADO, Vtd OPHIR, Vtd LITTLE RIVER: Block 9602011000, Block 9602011001, Block 9602011002, Block 9602011003, Block 9602011004, Block 9602011005, Block 9602011006, Block 9602011007, Block 9602011008, Block 9602011009, Block 9602011010, Block 9602011011, Block 9602011015, Block 9602011016, Block 9602011017, Block 9602011018, Block 9602011019, Block 9602011020, Block 9602011021, Block 9602011022, Block 9602011023, Block 9602011024, Block 9602011025, Block 9602011026, Block 9602011027, Block 9602011028, Block 9602011029, Block

9602011030, Block 9602011031, Block 9602011032, Block 9602011033, Block 9602011034, Block 9602011035, Block 9602011036, Block 9602011037, Block 9602012000; Vtd STAR: Block 9601011000, Block 9601011001, Block 9601011002, Block 9601011003, Block 9601011004, Block 9601011005, Block 9601011006, Block 9601011007, Block 9601011008, Block 9601011009, Block 9601011010, Block 9601011011, Block 9601011012, Block 9601011013, Block 9601011014, Block 9601011015, Block 9601011016, Block 9601011020, Block 9601011021, Block 9601011022, Block 9601011023, Block 9601011024, Block 9601011032, Block 9601011033, Block 9601011034, Block 9601011035, Block 9601011036, Block 9601011041, Block 9601011042, Block 9601011043, Block 9601011044, Block 9601011083.

District 3

District 3: Montgomery County: Vtd TROY 1: Block 9602021104, Block 9602021105, Block 9602021126, Block 9602022001, Block 9602022002, Block 9602022003, Block 9602022004, Block 9602022005, Block 9602022006, Block 9602022007, Block 9602022012, Block 9602022013, Block 9602022014, Block 9602022015, Block 9602022016, Block 9602022017, Block 9602022018, Block 9602022019, Block 9602022023, Block 9602022024, Block 9602022025, Block 9602022026, Block 9602022027, Block 9602022028, Block 9602022029, Block 9602022032, Block 9602022033, Block 9602022034, Block 9602022046, Block 9602022047, Block 9602022048, Block 9602022049, Block 9602022050, Block 9602022051, Block 9602022052, Block 9602022053, Block 9602023007, Block 9602023008, Block 9602023009, Block 9602023010, Block 9602023011, Block 9602023012, Block 9602023020, Block 9602023021, Block 9602023022, Block 9602023023, Block 9602023024, Block 9602023025, Block 9602023026, Block 9602023027, Block 9602023028, Block 9602023029, Block 9602023030, Block 9602023033, Block 9602023034, Block 9602023035, Block 9602023036, Block 9602023037, Block 9602023038, Block 9602023039, Block 9602023040, Block 9602023041, Block 9602023042, Block 9602023043, Block 9602023045, Block 9602023046; Vtd TROY 2: Block 9602012002, Block 9602012003, Block 9602012004, Block 9602012005, Block 9602012006, Block 9602012007, Block 9602012008, Block 9602012009, Block 9602012010, Block 9602012011, Block 9602012012, Block 9602012013, Block 9602012014, Block 9602012015, Block 9602012016, Block 9602012017, Block 9602012018, Block 9602012019, Block 9602012020, Block 9602012021, Block 9602012022, Block 9602012023, Block 9602012024, Block 9602012025, Block 9602012026, Block 9602012027, Block 9602012028, Block 9602012029, Block 9602012030, Block 9602012031, Block 9602012032, Block 9602012033, Block 9602012034, Block 9602012035, Block 9602012036, Block 9602012037, Block 9602012038, Block 9602012039, Block

9602012040, Block 9602012041, Block 9602012042, Block 9602012043, Block 9602012044, Block 9602012045, Block 9602012046, Block 9602012047, Block 9602012048, Block 9602012049, Block 9602012050, Block 9602012051, Block 9602012052, Block 9602012053, Block 9602021000, Block 9602021001, Block 9602021002, Block 9602021003, Block 9602021004, Block 9602021005, Block 9602021006, Block 9602021007, Block 9602021008, Block 9602021009, Block 9602021042, Block 9602021098, Block 9602021123, Block 9602023000, Block 9602023001, Block 9602023002, Block 9602023003, Block 9602023004, Block 9602023005, Block 9602023006, Block 9602023013, Block 9602023014, Block 9602023015, Block 9602023016, Block 9602023017, Block 9602023018, Block 9602023019, Block 9602023031, Block 9602023032, Block 9602023044, Block 9602023061; Vtd BISCOE: Block 9601023021, Block 9601023022, Block 9601023024, Block 9601023025, Block 9601023026, Block 9601023030, Block 9601023031, Block 9601023032, Block 9601023033, Block 9601023034, Block 9601023035, Block 9601023036; Vtd LITTLE RIVER: Block 9602011038, Block 9602011039, Block 9602011042, Block 9602011043, Block 9602012001; Vtd STAR: Block 9601023003, Block 9601024006, Block 9601024065, Block 9601024066, Block 9601024069, Block 9601024070, Block 9601024071, Block 9601024072; Vtd UWHARRIE: Block 9602022020, Block 9603011000, Block 9603011001, Block 9603011011, Block 9603011019, Block 9603011020, Block 9603011022, Block 9603011023, Block 9603011024, Block 9603011025, Block 9603011079, Block 9603011080, Block 9603011081, Block 9603022054, Block 9603022057, Block 9603022058, Block 9603022060, Block 9603022061, Block 9603022062, Block 9603022063, Block 9603022064.

District 4

District 4: Montgomery County: Vtd BISCOE: Block 9601011058, Block 9601011059, Block 9601011061, Block 9601011065, Block 9601011066, Block 9601011067, Block 9601011068, Block 9601011070, Block 9601011071, Block 9601011072, Block 9601011073, Block 9601021000, Block 9601021001, Block 9601021002, Block 9601021003, Block 9601021004, Block 9601021005, Block 9601021006, Block 9601021007, Block 9601021008, Block 9601021009, Block 9601021010, Block 9601021011, Block 9601021013, Block 9601021018, Block 9601021019, Block 9601021020, Block 9601021021, Block 9601021022, Block 9601021023, Block 9601021024, Block 9601021029, Block 9601021030, Block 9601022000, Block 9601022001, Block 9601022002, Block 9601022003, Block 9601022004, Block 9601022005, Block 9601022006, Block 9601022007, Block 9601022008, Block 9601022016, Block 9601022017, Block 9601022019, Block 9601023017, Block 9601023018, Block 9601023019, Block 9601023023, Block 9601023027, Block 9601023028, Block 9601023029, Block 9601023039, Block

[illegible]

Block 9601024062, Block 9601024063, Block 9601024064, Block 9601024067,
Block 9601024068.

District 5

District 5: Montgomery County: Vtd WADEVILLE, Vtd TROY 1: Block
9602021016, Block 9602021017, Block 9602021018, Block 9602021019, Block
9602021020, Block 9602021021, Block 9602021024, Block 9602021025, Block
9602021026, Block 9602021027, Block 9602021028, Block 9602021029, Block
9602021030, Block 9602021031, Block 9602021032, Block 9602021033, Block
9602021045, Block 9602021047, Block 9602021050, Block 9602021051, Block
9602021052, Block 9602021053, Block 9602021054, Block 9602021055, Block
9602021056, Block 9602021057, Block 9602021058, Block 9602021059, Block
9602021060, Block 9602021061, Block 9602021062, Block 9602021063, Block
9602021064, Block 9602021065, Block 9602021066, Block 9602021067, Block
9602021068, Block 9602021069, Block 9602021070, Block 9602021071, Block
9602021072, Block 9602021073, Block 9602021074, Block 9602021075, Block
9602021076, Block 9602021077, Block 9602021078, Block 9602021079, Block
9602021080, Block 9602021081, Block 9602021082, Block 9602021083, Block
9602021084, Block 9602021085, Block 9602021086, Block 9602021087, Block
9602021088, Block 9602021089, Block 9602021090, Block 9602021091, Block
9602021092, Block 9602021093, Block 9602021094, Block 9602021100, Block
9602021101, Block 9602021102, Block 9602021103, Block 9602021106, Block
9602021107, Block 9602021108, Block 9602021109, Block 9602021110, Block
9602021112, Block 9602021113, Block 9602021121, Block 9602021122, Block
9602021125, Block 9602022000, Block 9602022008, Block 9602022009, Block
9602022010, Block 9602022011, Block 9602022021, Block 9602022022, Block
9602022030, Block 9602022031, Block 9602022035, Block 9602022036, Block
9602022037, Block 9602022038, Block 9602022039, Block 9602022040, Block
9602022041, Block 9602022042, Block 9602022043, Block 9602022044, Block
9602022045, Block 9602023047, Block 9602023048, Block 9602023049, Block
9602023050, Block 9602023051, Block 9602023052, Block 9602023053, Block
9602023054, Block 9602023055, Block 9602023056, Block 9602023057, Block
9602023058, Block 9602023059, Block 9602023060, Block 9604021012, Block
9604021013; Vtd TROY 2: Block 9602021010, Block 9602021011, Block
9602021012, Block 9602021013, Block 9602021014, Block 9602021015, Block
9602021022, Block 9602021023, Block 9602021034, Block 9602021035, Block
9602021036, Block 9602021037, Block 9602021038, Block 9602021039, Block
9602021040, Block 9602021041, Block 9602021043, Block 9602021046, Block
9602021049, Block 9602021124; Vtd CHEEKS CREEK: Block 9605022021, Block
9605022022; Vtd MT GILEAD: Block 9604011000, Block 9604011001, Block

9604011002, Block 9604011003, Block 9604011004, Block 9604011005, Block 9604011007, Block 9604011008, Block 9604011009, Block 9604011010, Block 9604011011, Block 9604011012, Block 9604011013, Block 9604011018, Block 9604011049, Block 9604011050, Block 9604012000, Block 9604012001, Block 9604012002, Block 9604012003, Block 9604012004, Block 9604012005, Block 9604012009, Block 9604012010, Block 9604012011, Block 9604021049, Block 9604021055, Block 9604021056, Block 9604021057, Block 9604021058, Block 9604021059, Block 9604021060, Block 9604021061, Block 9604021063, Block 9604021064, Block 9604022031; Vtd PEE DEE: Block 9604021019, Block 9604021020, Block 9604021021, Block 9604021024, Block 9604021025, Block 9604021028, Block 9604021030, Block 9604021042, Block 9604021043, Block 9604021044, Block 9604021045, Block 9604021048, Block 9604021073, Block 9604022000, Block 9604022024, Block 9604022025, Block 9604022026.

District 6

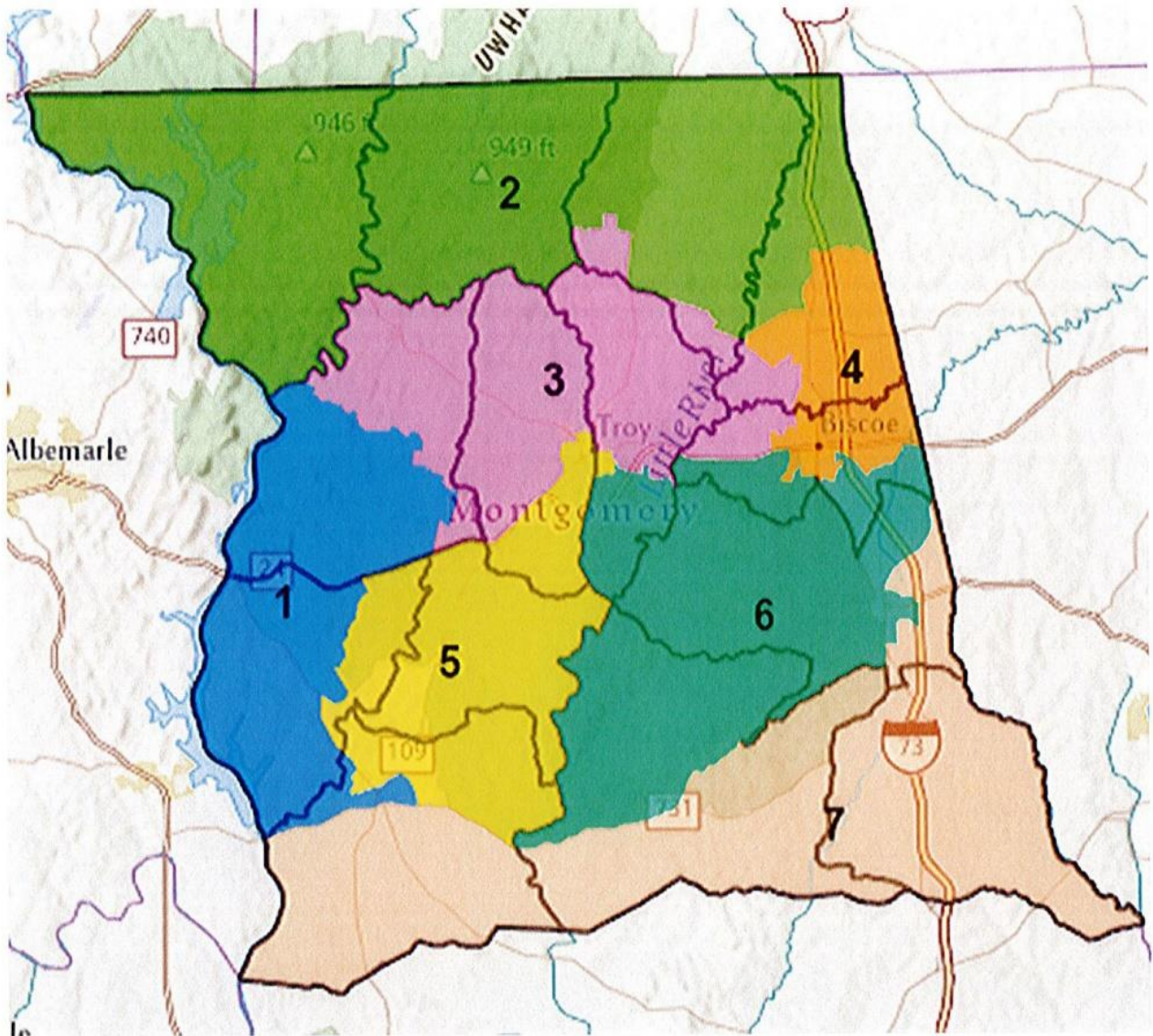
District 6: Montgomery County: Vtd TROY 2: Block 9602021044, Block 9602021048, Block 9602021095, Block 9602021096, Block 9602021097, Block 9602021099, Block 9602021111, Block 9602021114, Block 9602021115, Block 9602021116, Block 9602021117, Block 9602021118, Block 9602021119, Block 9602021120; Vtd BISCOE: Block 9601011069, Block 9601011074, Block 9601011075, Block 9601011076, Block 9601011077, Block 9601011078, Block 9601011082, Block 9601021012, Block 9601021014, Block 9601021015, Block 9601021016, Block 9601021017, Block 9601021025, Block 9601022009, Block 9601022010, Block 9601022011, Block 9601022012, Block 9601022013, Block 9601022014, Block 9601022015, Block 9601022020, Block 9601022021, Block 9601022034, Block 9601023037, Block 9601023038; Vtd CANDOR: Block 9601011079, Block 9601011080, Block 9601011081, Block 9601021026, Block 9601021027, Block 9601021028, Block 9601022018, Block 9601022022, Block 9601022023, Block 9601022024, Block 9601022025, Block 9601022026, Block 9601022027, Block 9601022028, Block 9601022029, Block 9601022030, Block 9601022031, Block 9601022032, Block 9601022033, Block 9601022035, Block 9605011014, Block 9605011017, Block 9605011018, Block 9605011024, Block 9605011025, Block 9605011026, Block 9605011027, Block 9605011028, Block 9605011029, Block 9605011030, Block 9605011031, Block 9605011032, Block 9605011033, Block 9605011034, Block 9605011035, Block 9605011036, Block 9605011037, Block 9605011038, Block 9605011039, Block 9605011040, Block 9605011041, Block 9605011042, Block 9605011043, Block 9605011044, Block 9605011045, Block 9605011046, Block 9605011048, Block 9605011049, Block 9605011050, Block 9605011051, Block 9605011052, Block 9605011053, Block 9605011054, Block 9605011055, Block 9605011056, Block 9605011057, Block

9605011058, Block 9605011062, Block 9605011063, Block 9605011064, Block 9605011067, Block 9605011068, Block 9605011069, Block 9605011072, Block 9605021000, Block 9605021001, Block 9605021002, Block 9605021003, Block 9605021004, Block 9605021005, Block 9605021006, Block 9605021007, Block 9605021008, Block 9605021009, Block 9605021010, Block 9605021011, Block 9605021012, Block 9605021013, Block 9605021014, Block 9605021015, Block 9605021016, Block 9605021017, Block 9605021018, Block 9605021019, Block 9605021020, Block 9605021021, Block 9605021022, Block 9605021023, Block 9605021024, Block 9605021025, Block 9605021026, Block 9605021027, Block 9605021028, Block 9605021029, Block 9605021030, Block 9605021031, Block 9605021032, Block 9605021033, Block 9605021034, Block 9605021035, Block 9605022001; Vtd CHEEKS CREEK: Block 9605022008, Block 9605022009, Block 9605022010, Block 9605022013, Block 9605022014, Block 9605022015, Block 9605022016, Block 9605022017, Block 9605022018, Block 9605022019, Block 9605022020, Block 9605022023, Block 9605022024, Block 9605022025, Block 9605022026, Block 9605022027, Block 9605022028, Block 9605022029, Block 9605022030, Block 9605022031, Block 9605022032, Block 9605022033, Block 9605022034, Block 9605022035, Block 9605022036, Block 9605022037, Block 9605022038, Block 9605022039, Block 9605022040, Block 9605022041, Block 9605022042, Block 9605022043, Block 9605022049, Block 9605022050, Block 9605022051.

District 7

District 7: Montgomery County: Vtd ROCKY SPRINGS, Vtd CANDOR: Block 9605011000, Block 9605011001, Block 9605011002, Block 9605011003, Block 9605011004, Block 9605011005, Block 9605011006, Block 9605011007, Block 9605011008, Block 9605011009, Block 9605011010, Block 9605011011, Block 9605011012, Block 9605011013, Block 9605011015, Block 9605011016, Block 9605011019, Block 9605011020, Block 9605011021, Block 9605011022, Block 9605011023, Block 9605011047, Block 9605011059, Block 9605011060, Block 9605011061, Block 9605011065, Block 9605011066, Block 9605011070, Block 9605011071, Block 9605011073, Block 9605011074, Block 9605022000; Vtd CHEEKS CREEK: Block 9605022002, Block 9605022003, Block 9605022004, Block 9605022007, Block 9605022011, Block 9605022012, Block 9605022044, Block 9605022045, Block 9605022046, Block 9605022047, Block 9605022048, Block 9605022052, Block 9605022053, Block 9605022054, Block 9605022055, Block 9605022056, Block 9605022057, Block 9605022058, Block 9605022059, Block 9605022060, Block 9605022061, Block 9605022062, Block 9605022063, Block 9605022064, Block 9605022065, Block 9605022066, Block 9605022072,

Block 9605022073, Block 9605022074, Block 9605022075, Block 9605022076,
Block 9605022077, Block 9605022078, Block 9605022079, Block 9605022080,
Block 9605022081, Block 9605022082, Block 9605022088, Block 9605022089; Vtd
MT GILEAD: Block 9604011032, Block 9604011038, Block 9604011039, Block
9604011040, Block 9604011041, Block 9604011042, Block 9604011043, Block
9604011044, Block 9604011045, Block 9604011046, Block 9604011048, Block
9604011053, Block 9604011054, Block 9604011055, Block 9604011057, Block
9604011058, Block 9604011059, Block 9604011060, Block 9604011061, Block
9604011062, Block 9604011063, Block 9604011064, Block 9604011065, Block
9604012015, Block 9604012016, Block 9604012017, Block 9604012018, Block
9604012019, Block 9604012020, Block 9604012021, Block 9604012022, Block
9604012029, Block 9604012030, Block 9604012031, Block 9604012032, Block
9604012033, Block 9604012034, Block 9604012035, Block 9604012036, Block
9604012037, Block 9604012038, Block 9604012039, Block 9604012040, Block
9604012041, Block 9604012042, Block 9604012043, Block 9604012044, Block
9604012045, Block 9604012046, Block 9604012047, Block 9604012048, Block
9604012049, Block 9604012050, Block 9604012051, Block 9604012052, Block
9604021062, Block 9604021065, Block 9604021066, Block 9604021067, Block
9604021068, Block 9604021069, Block 9604021070, Block 9604021071, Block
9604021072, Block 9604021077.



Montgomery Alternative A Adopted

Election Districts Map approved by the Montgomery County NC Board of Education
at its meeting on November 15, 2021.

Chairman DeBerry called upon Dr. Ellis for OSHA Temporary Standards. Dr. Ellis recalled as you are aware we received a memo from the state announcing the OSHA Temporary Standards. The memo states we have to comply with the federal requirement to require employees to have the vaccine or be tested. We do want to get this out there publicly. That it did come down from the federal government so that members of the school district and the public at large know that we did get that direction. It did come from the federal government and not this board of education, if and when, we do need to start doing it. There have been several lawsuits filed against it and currently there is a stay. We are working behind the scenes to do what we need to do to comply with that standard, should it pass and be required. Once again, I want it publicly stated that this is a federal standard communicated to us from the federal level. At some point, we may have to begin that process. But, right now, due to litigation it is under a current

stay. I think there will be arguments in this next week as whether or not that injunction should be permanent. I will have definite information in December. At the time we built this agenda we had a very tight timeline. That is why it is on the agenda. I felt that it was necessary to let people know that it is out there even though we do not have to comply with it at this time. Steve DeBerry asked if passed when would it be required. Dr. Ellis stated at the time it would have been December 5. Given the stay, I expect it would be extended. Bryan Dozier asked if required what would be the process. Dr. Ellis responded staff would have to show proof of vaccination or be tested weekly at their expense. Mr. Dozier mentioned we have to have a process to keep check with compliance. Dr. Ellis stated we should know definitively by our December meeting. We have developed processes and procedures with Mr. Grit and Mr. Woodard. If it becomes required and we have to comply with this federal law we will be prepared to do so. Lynn Epps voiced concern of losing employees if forced to comply. Members discussed if it becomes federal standard it will be required anywhere they go.

Chairman DeBerry asked for a motion to adjourn the meeting. Bryan Dozier made a motion with a second by Lynn Epps the meeting was duly adjourned.

The next regular meeting will be Monday, December 6, 2021 at 6:30 pm in the Montgomery County Central Office Boardroom.

Steven W. DeBerry, Chairman

Dale Ellis, Ed. D., Secretary